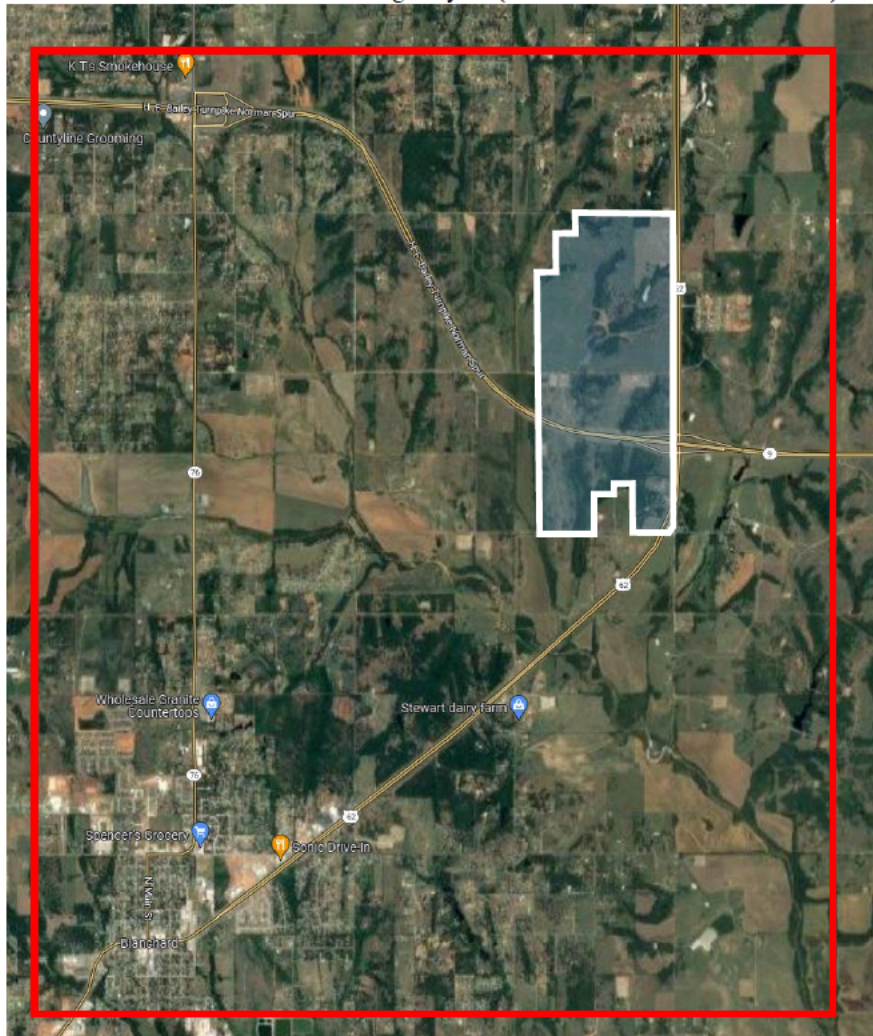


**EXHIBIT "C"**

**MAP OF ECONOMIC DEVELOPMENT PROJECT AREA**

The boundaries of the Project Area associated with Increment District No. 2, City of Blanchard contain an area comprising 30 square miles bordered on the south by 290<sup>th</sup> Street (7<sup>th</sup> Street S.), on the west by N. County Line Road, on the north by 350<sup>th</sup> Street (SW 24<sup>th</sup> Street), and on the east by the section line one mile east of State Highway 62 (Portland Avenue extended south).



\* Project Area is outlined by red border. Increment District boundaries contained within white border and shaded blue